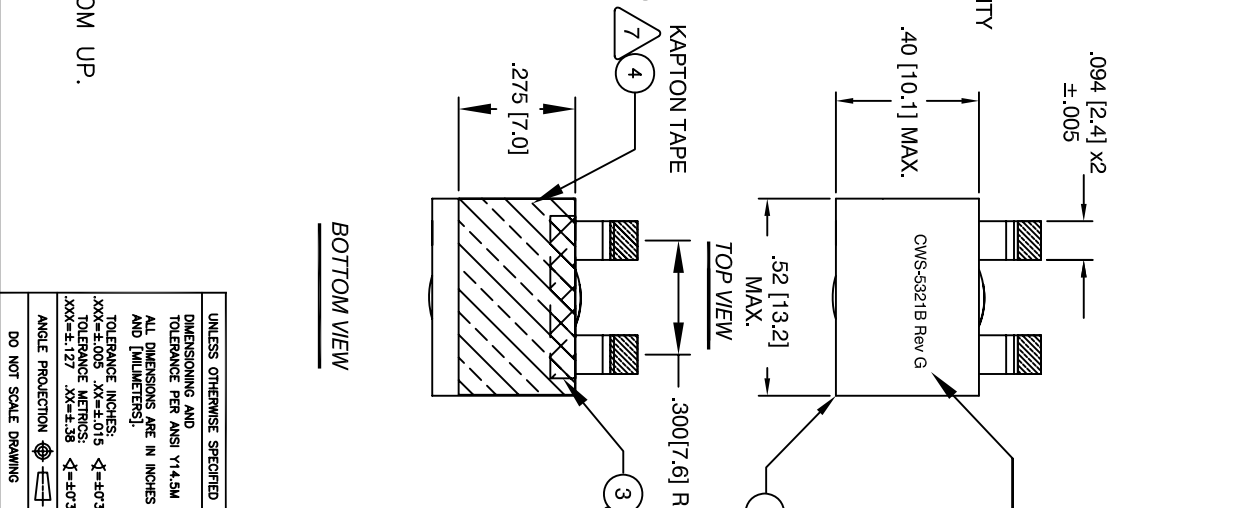


The information contained in this drawing is the sole property of Coil Winding Specialist, Inc. Any reproduction in part or whole without written permission of Coil Winding Specialist is prohibited.

- 10 BUILT TO ROHS COMPLIANCE AND LEAD FREE
- STANDARD REEL QUANTITY
- CUT REEL OR BULK PACK FOR QUANTITY LESS THAN
- PART WILL BE SUPPLIED IN TAPE & REEL OF 500 PIECES QUANTITY
- 8 A PERMANENT MARKING METHOD
- MARK PART NUMBER AND REVISION WHERE SHOWN USING
- 7 BASE OF CORE
- ONE LAYER OF KAPTON TAPE 0.275 INCH TO BOTTOM
- 6 THE EDGE TO BOTTOM BASE OF CORE
- WRAP FROM CENTER LEG OF BOTTOM CORE AROUND
- ONE LAYER OF KAPTON TAPE 10.15 MM WIDTH TO
- 5 THE LEAD MUST REST FLAT ON PCB
- FILL WINDING AND CORE WITH EPOXY 2 PART A&B (600°F, 315°C)
- REMOVE INSULATION AND TIN LEADS APPROX. 0.10 INCH
- 4 HELIX WIND 4-3/4 TURNS TIGHT TO CORE AND EVENLY SPACED
- CONSTRUCTION:
- H1POT (2 SECOND, 5mA MAX), 300 VRMS WINDING TO CORE
- DCR = 2.1 mOHM MAX. @ 25 ° C
- MAX. OPERATING TEMP 140°C
- RATED CURRENT = 40 A
- L = 2.0 uH ± 15%, 0.25V, 0.5 A, 100Khz.
- SPECIFICATIONS:
- 3 EPOXY: 2 PARTS A & B (600°F- 315°C)
- WIRE: UL RECOGNIZED 200°C RATED MAGNET WIRE, JIS C3102
- CWS BYTEMARK OR OTHER APPROVED PART
- CORE: HIGH FLUX
- 2
- 1 HELICAL COIL RATING 200°C REQUIRED
- MATERIAL: UL RECOGNIZED 94V-0 FOR FLAMMABILITY



REVISION HISTORY			
REV	ECN	DESCRIPTION	
C		INITIAL PRODUCTION RELEASE	
D		ADD KAPTON TAPE (ITEM 4) ON BASE	
E		CORRECTION ON INDUCTANCE TOLERANCE TO ±10%	
F		CORRECTION ON REV D & E AS ONE REVISION	
G		DIMENSIONAL CHANGE	

REV	DATE	CHK	DATE
C	2/28/04	JLAW	5/11/07
D	5/11/07	JLAW	5/11/07
E	5/11/07	JLAW	5/11/07
F	8/28/08	RL	8/28/08
G	01/29/13	BO	01/29/13

A/R	QTY	UM	CODE	IDENT	MFG. P/N	DESCRIPTION	ITEM NO.
1	2".0	CWS	E126174			EPOXY 2 PARTS A&B (600°F, 315°C)	5
1	.42"	CWS	KAPTON TAPE			KAPTON TAPE, 0.275"W x 0.5"	4
1	EA	CWS	DP-31			2.4x .52mm RIBBON WIRE	3
2	EA	CWS				9.51x 13.0 mm HIGH FLUX CORE	2

PARTS LIST	
AUTOCAD	X
SOLIDWORKS	
DRWN	TJK
DATE	4/11/03
ENGR	JLAW
DATE	4/11/03
APPR	JLAW
DATE	4/11/03

TITLE:	
Output Choke, 2.0 uH, 40 Amp	
(2.4mmx .52 mm 4-3/4T)	

SIZE	DWG. NO.	REV
B	CWS-5321B	G

SCALE	SHEET	OF
4=1	1	1